

**IT68051\_66121 EVB**

**User Guide**

**Version 0.10**

## 1. IT68051\_66121 EVB board

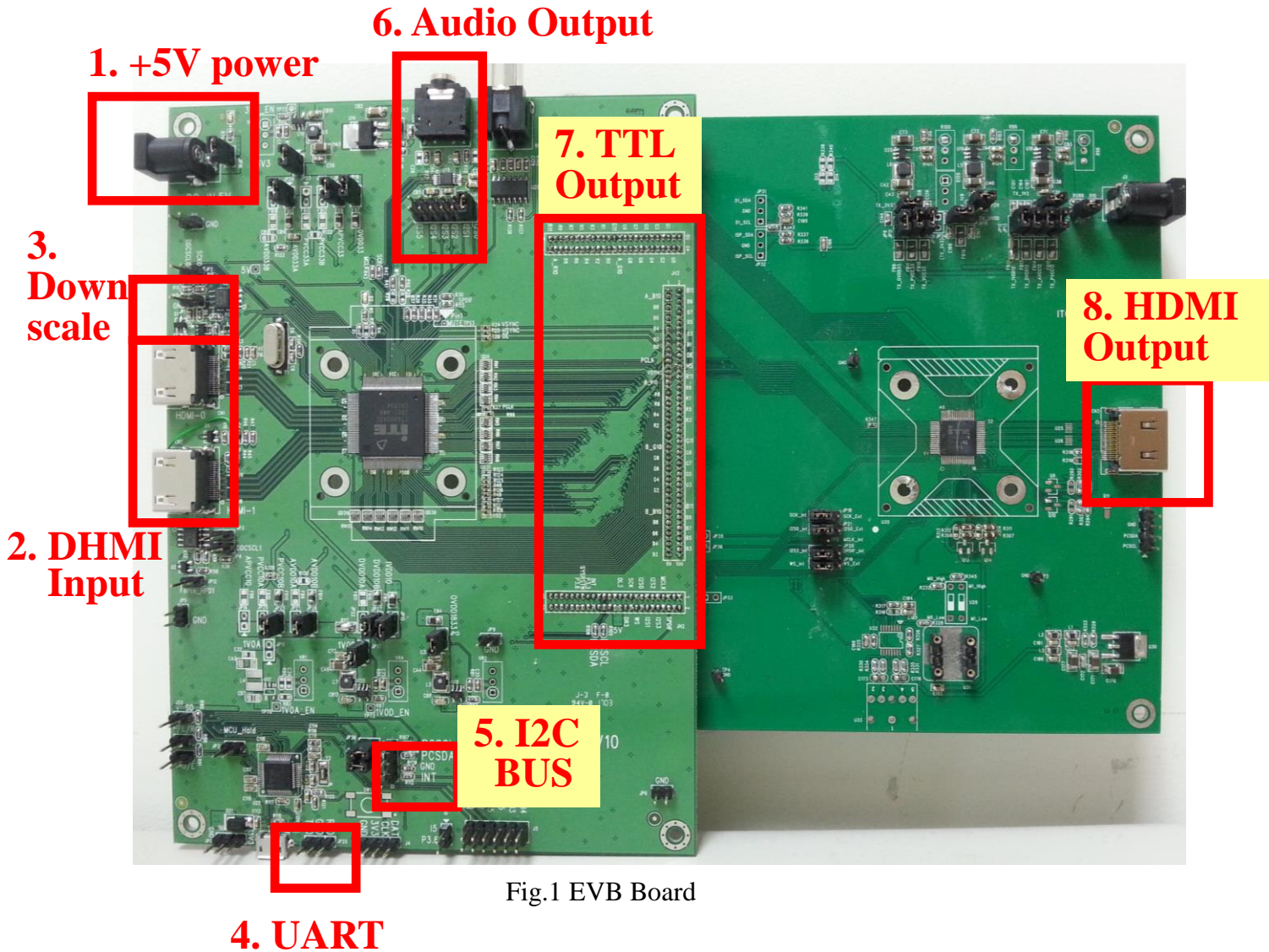


Fig.1 EVB Board

1. +5V Power supply
2. HDMI Input
3. Down Scale setting
4. UART
5. I2C BUS
6. Audio Output
7. TTL Output
8. HDMI Output

### 2.1. +5V Power supply (Item 1)

- IT68051\_66121 EVB can operate at +5 voltage by J2 connector
- If JP10 is closed then enable power input and power indicator LED D8 ON

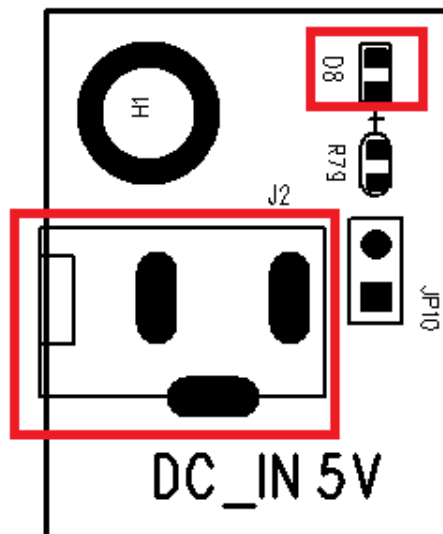


Fig.2 +5V Power Supply

### 2.2. HDMI Signal Input (Item 2)

- HDMI 0 Connector(CN1) → Max resolution 4K2K@60hz, HDCP 2.2
- HDMI 1 Connector(CN2) → Max resolution 4K2K@60hz, HDCP 1.4

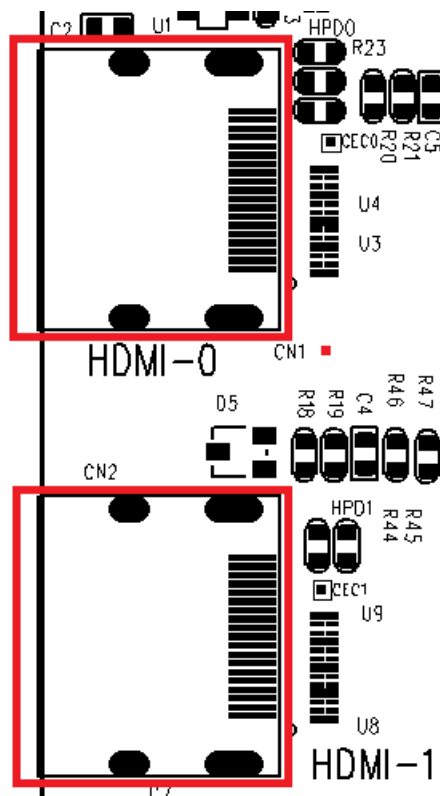


Fig.3 HDMI Signal Input

### 2.3. Down Scale setting (Item 3)

- If JP1 is closed then enable Down-Scale output

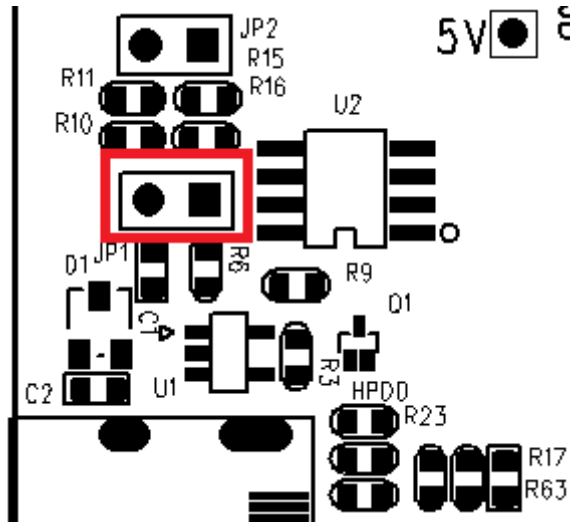


Fig.4 Down-Scale setting

### 2.4. UART (Item 4)

- JP35 UART output → Baud rate 115200

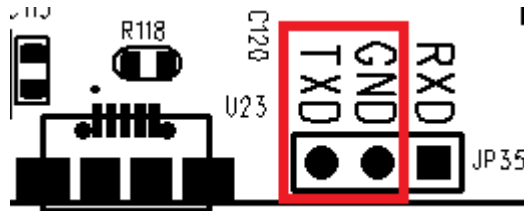


Fig.5 External DP\_3V3 power supply

### 2.5. I2C BUS (Item 5)

- J3 I2C BUS → default address 0x90

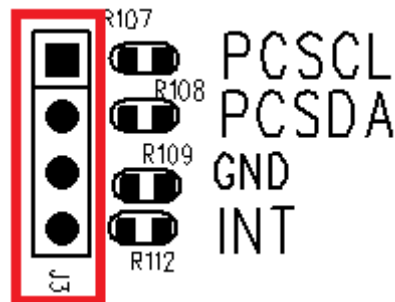


Fig.6 I2C BUS

## 2.6. Audio Output

- U16 Audio Output
- J1 → I2S Output select

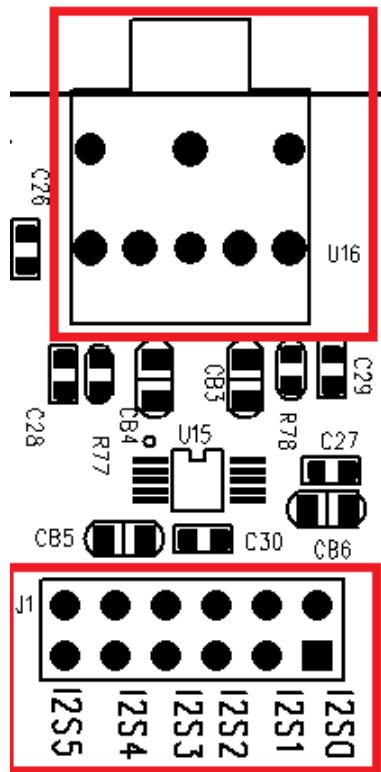


Fig.7 Audio Output

## 2.7 HDMI Signal Output

- CN3 HDMI Signal Output → Max resolution: 1080P 24bits

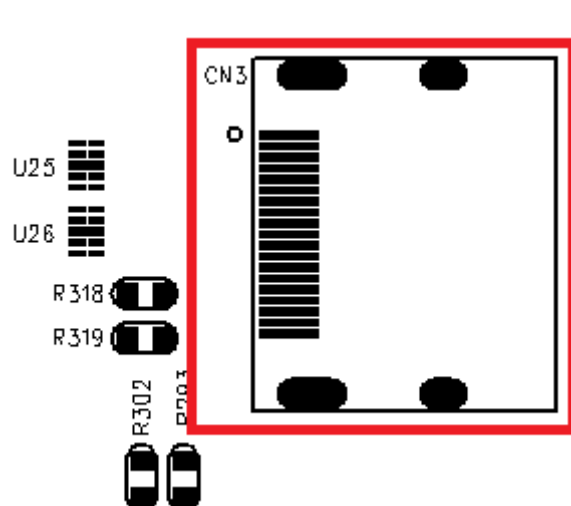


Fig.8 HDMI Signal Output